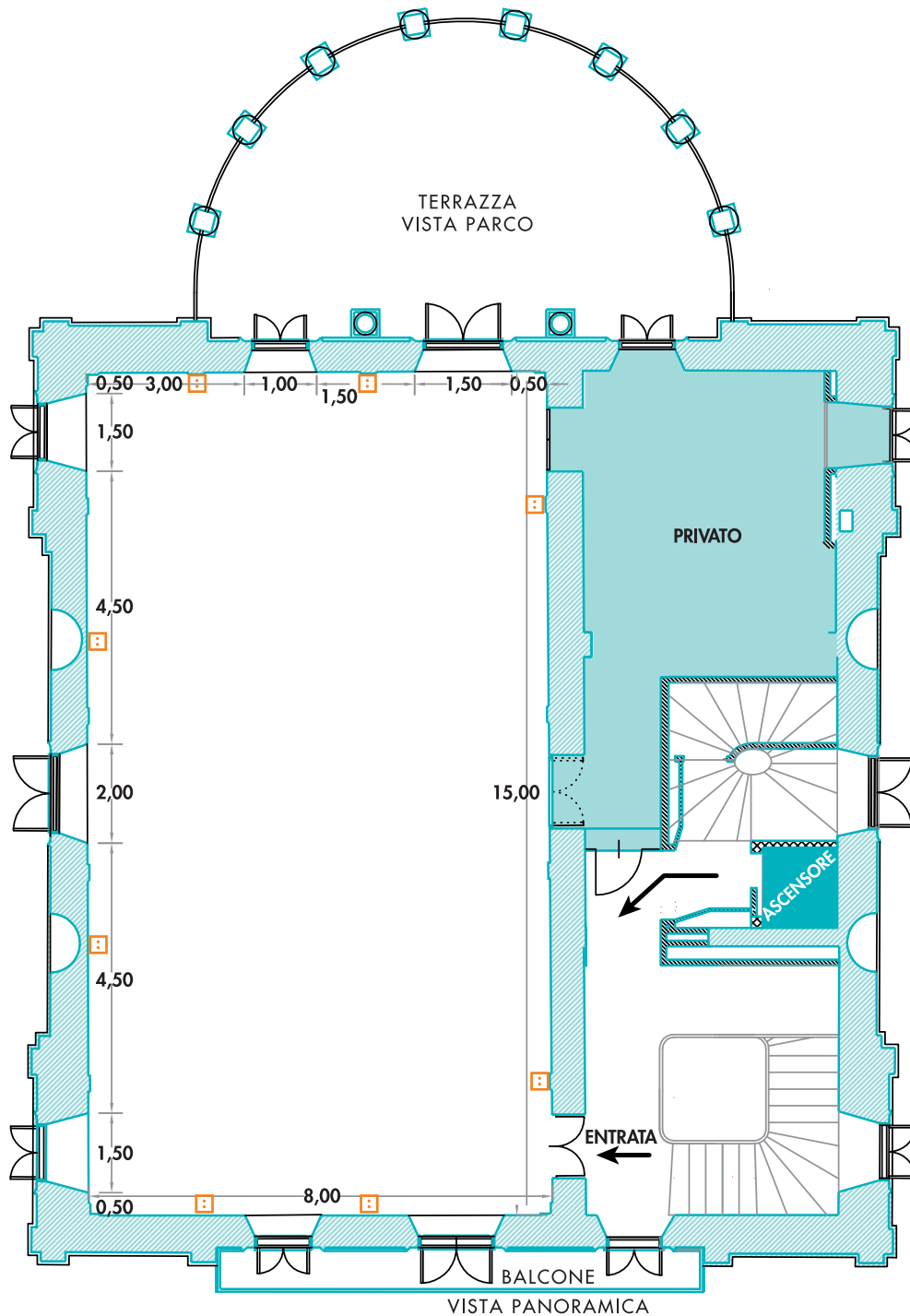










SALA DEGLI SPECCHI

2° PIANO



 prese elettriche

NOME SALA	DIMENSIONI	ALTEZZA	CENA	TEATRO	TAVOLO UNICO	RECEPTION	FERRO DI CAVALLO
120m ²							
sala degli specchi	15,00x8,00	3,40	154	130	46	180	40